

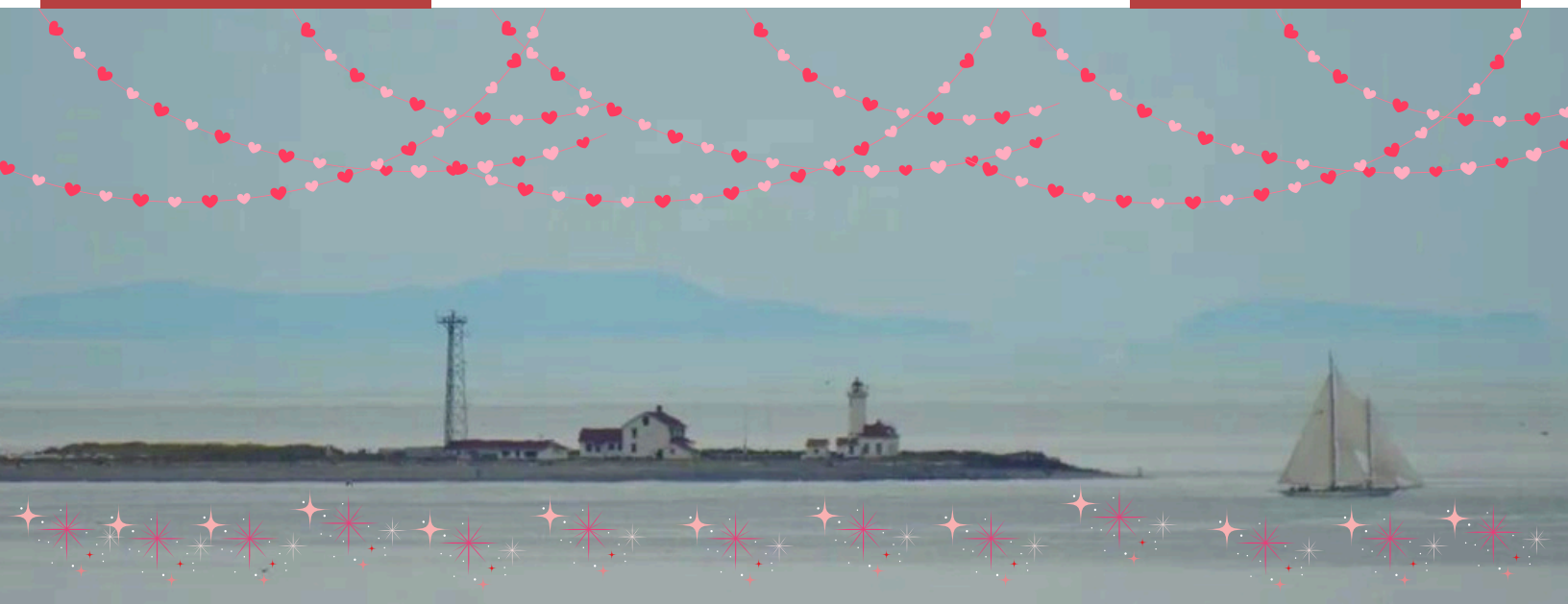
Edition # 15

February 10, 2025

SALISH SEA FELLOWSHIP

A Religious Community with Open Hearts and Open Minds

COMMUNITY UPDATE



WWW.SALISHSEAFELLOWSHIP.ORG

ALL ARE
WELCOME

>>> ABOUT US

The Salish Sea Fellowship is a center for liberal religion providing an independent educational, spiritual and liberal religious community of mutual support that embraces the traditional *seven principles* of Unitarian Universalism. This is our Community Update for our friends and members. If you have anything you would like to tell the community, please let us know at salishseafellowship@gmail.com.

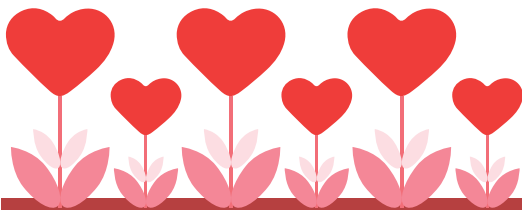
HOW TO FIND US <<<

We meet in-person at the Community United Methodist Church (CUMC) in Port Hadlock, 130 Church Lane.

UPDATE: OUR ZOOM LINK HAS CHANGED AS OF 2/10/25

Click [HERE](#) for our updated Zoom link for viewing our services, or go to Zoom and enter Meeting ID: 909 702 5487, Passcode: 338490.

JOIN US
IN
COMMUNITY



UPCOMING EVENTS



NOTE:
 January 16th will be our last
 Sunday Service starting at 2:00.
Beginning in March
 all Sunday Service will start at 4:00.



JOYCE FRANCIS: NATURE'S GRACE

SUNDAY SERVICE, FEBRUARY 16, 2 PM AT CUMC

We are, no doubt, all familiar with these refrains from that wonderful spiritual by John Newton: "Amazing Grace, how sweet the sound that saved a wretch like me." And then later on: "How precious did that Grace appear the hour I first believed." Newton's hymn is perhaps the iconic notion of Christian Grace. In this sermon, I will share with you my personal story of Grace, one of those hard-to-explain events some might call miraculous. Doris Lessing perhaps best captures my agnostic's idea of Grace as "something given by Nature in her role of spendthrift," thus, I use the term Nature's Grace.



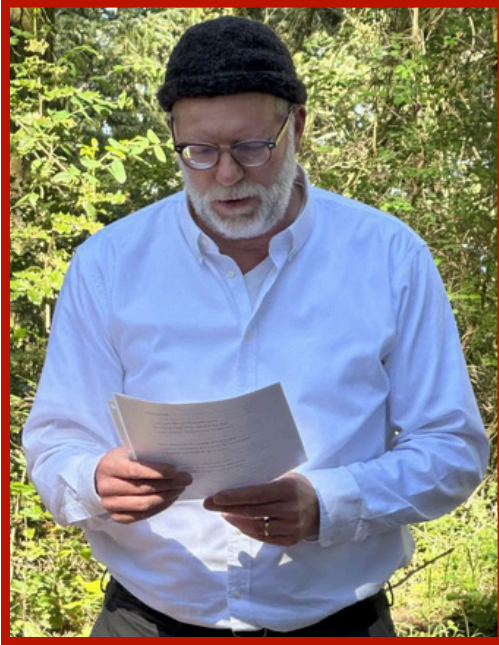
COMMUNITY ACTION:

Mark your calendar for **February 16!** After the service we will host **Jean Walat of JCIRA** in our after-service informal discussion circle. She will introduce us to the **Jefferson County Immigrant Rights Advocates** organization and discuss the current planning to aid undocumented persons in our community. Bookmark www.jcira.org to keep up with the latest information.

This presentation will be in lieu of our usual Q&A with our speaker Joyce Francis (thank you Joyce!), but **Joyce plans on being available at our usual Wednesday Breakfast on the 19th** (see Breakfast Club below) **if you'd like to talk with her about her sermon.**



UPCOMING EVENTS



Joseph Bednarik SUNDAY SERVICE, MARCH 2, 4 PM AT CUMC

The Salish Sea Fellowship Community looks forward to Joseph Bednarik's return. Additional information will be available soon. Keep your eyes peeled!



SALISH SEA COMMUNITY POTLUCK SUNDAY, MARCH 9, 5 PM AT CUMC



Doors open at 4:30 to allow for more socializing.
Please RSVP to salishseafellowship@gmail.com so we know how many to expect, and as always, bring your own beverages and table settings, as well as a dish to share.



UPCOMING EVENTS



Upcoming Opportunity!

Ken Ing is Speaking to the **NAUA Academy** tomorrow, **Tuesday, February 11th** from **4:30-7:00 PM**, on **"Boom or Doom: Is Unleashing Artificial Intelligence Wise?"**

You may register [HERE](#).



Attention!

Our Zoom link has changed!
Please Bookmark our new Zoom link [HERE](#)
for your convenience!



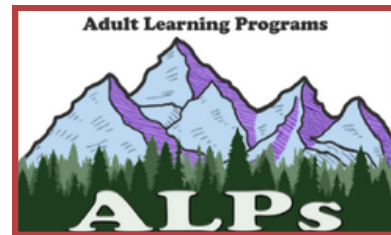
WHERE TO WATCH



Services you missed, are available [**HERE**](#). Sunday services that are available include the sermon and readings. Also, we now have 20 subscribers to our YouTube channel! You may access our YouTube channel [**HERE**](#). Finally, you may also click [**HERE**](#) to access our Sunday services live on Zoom. **(Please note that our Zoom link has changed, bookmark this new link!)**



ALPs (Adult Learning Programs)



February ALPs classes you won't want to miss:

WINTER BIRDING - Wednesday, Feb. 12, 8-11 AM at Fort Flagler. Master Birders Dave Rugh & Penny Ridderbusch will lead a walk along the shoreline & more.

CLIMATE TIPPING POINTS - 3 Thursdays, Feb 12-27, 2-3:30 PM at CUMC. Environmentalist Mark Cooper will present 16 climate tipping points for your consideration.

CLASSIC FRENCH DESSERTS - Saturday, Feb 15, 12:30-4 PM in Judy's home. Culinary Institute Graduate Judy King will teach you to make four famous desserts. --**SORRY, full!**

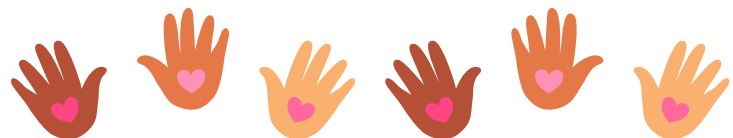
COLLECTING STUDIO ART IN JEFFERSON COUNTY - Saturday, Feb 22, 10:30 AM-Noon in Port Ludlow. Patsy Lea & Dan Meade, owners of one of Jefferson County's most spectacular homes with an amazing art collection, have invited two of their favorite artists to walk you through their home and view/discuss their art.

SAVING THE WORLD BY UNDERSTANDING OURSELVES BETTER - Sunday, Feb 23, 2-3:30 PM at CUMC. Deep Thinker Doug Rodgers continues his series about our world, where it is going and what is our place in it. This segment focuses on a right-brain perspective.

See full descriptions and enrollment information at:
<https://salishseafellowship.org/other-activities-and-events/>



Small Group Offerings



The **Salish Sea Fellowship Political Discussion Group** began as an ALPs group with a goal of becoming an Interest Group. Currently five members are delving into national and global politics from the viewpoints of history and culture. Some of us are certainly more knowledgeable than others, but all are committed to study and discussion as world events change around us. Are past/current events just one thing after another? Or can we discern trends? **This is an ongoing group which meets regularly by Zoom on the first and third Thursdays from 3:30-5:00.** Are you interested in joining us at this developmental stage? Please call Martha Moyer at cell 360-460-2528 with questions.



CARING AND CONCERNS TEAM

5



Breakfast Club:

Breakfast Club meetings are back on after the bustle of the holidays!

Sarah and Karen will hang out on Wednesdays (**ALL Wednesdays of the month**) at **9:30 AM** at the **Bay View Restaurant**. Join together for coffee, tea, breakfast or even pie! You could add ice cream (in the dairy group)!

Community Potluck:

Please join us to chase away the cold and gloom with lots of laughter, chatter, and yummy food! Community fills up our hearts during unsure times.

Carpooling to Events:

Have you noticed how dark it is lately? It's that time of year; if you are interested in carpooling, please send an email to salishseafellowship@gmail.com. Tell us your preferred pickup location and phone number, and we will figure out a plan.

FROM YOUR BOARD:



BRIAN ROGERS, RON STRANGE, GARY NELSON, JUDY KING, ROB WAMSTAD, & NILS PEDERSEN

North American Unitarian Association:

At our last meeting, your Board of Directors began to consider the idea of joining the North American Unitarian Association (NAUA, naunitarians.org). Given our history, some of us may be hesitant to join any association; at this point it seems we value our independence. The NAUA states on its homepage that it is there to help liberal religion thrive, and that it 'is a member service organization dedicated to supporting and promoting the practice of liberal religion by embracing freedom, reason, and tolerance—rooted in our commitment to the inherent worth and dignity of every person and all peoples.' We also realize that the SSF is the largest 'breakaway' congregation, and our joining the NAUA, beyond making a statement, would also put us in a position to help other smaller congregations deal with the various issues and complexities involved in running a congregation. In any case, we as a board feel that any decision in this regard should be made by the membership as a whole, and so we would ask you to begin learning about the NAUA.

Feel free to take a look at their website, naunitarians.org, or ask some of our Fellowship members that are individual members of NAUA, like Joyce Francis, Ron Strange and Ken Ing. In fact, Ken Ing is offering a class through the NAUA Academy this Tuesday, February 11th at 4:30 PM on "Boom or Doom: Is Unleashing Artificial Intelligence Wise?" Register at <https://naunitarians.org/services-and-programs-of-the-naua/naua-academy/>



FROM YOUR BOARD:

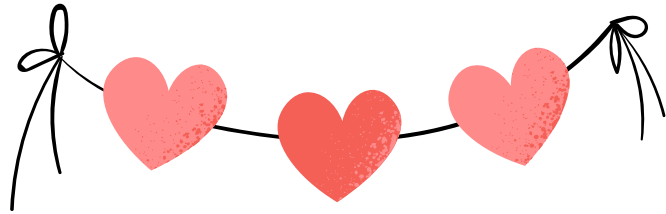
BRIAN ROGERS, RON STRANGE, GARY NELSON, JUDY KING, ROB WAMSTAD, & NILS PEDERSEN

Pledge Campaign:

Our Treasurer, Judy King, reports that we are now over our pledge goal of \$57,475! Woo hoo! This is excellent, thank you all so much for responding so generously and promptly. This makes our work and planning so much easier! We should also note that our surplus from last year was larger than expected. After accounting for 2024 expenses, and setting aside \$10k into a reserve/emergency fund, your generous contributions through both your pledges and passing the plate still left us with about \$20,000 that we can apply to 2025 expenses. **Thank you!**



MEMORIAL SERVICE



Beloved mother, grandmother, wife, and friend, **Abby Kimball** passed away peacefully in her home in Port Townsend on December 13, 2024. Like her beautiful obituary reminds us, “Abby had a gift for bringing beauty to the world. She would play the piano at any request, filling rooms with music and joy. Her warmth and boundless passion left an indelible mark on everyone she met. Abby’s spirit will forever live in the winds and trees of Kala Point, and in the hearts of all who knew and loved her.” Abby was a treasured friend of our Fellowship, and a dear friend to many in our community. Her life will be celebrated at the Kala Point Clubhouse on February 21, 2025 at 2pm. The address is: 1760 Kala Point Drive, Port Townsend, WA 98368. Please read about Abby’s full and beautiful life [HERE](#).

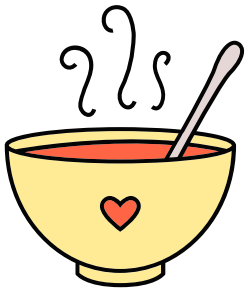




HELPING OUR NEIGHBORS



Our hosts, the Community United Methodist Church (CUMC) staff a free foodpantry and clothes closet on Saturdays from 10 to 1:00. With winter upon us, donations of individual pull-tab cans of chili, stew, hash and spam are exceptionally helpful, along with packets of hot chocolate, coffee and pasta with sauce. Warm coats, shirts, pants, scarves, gloves and blankets are also needed, but for now no lightweight clothing due to limited storage space. Please give nothing that is not clean, in good condition and something you would wear yourself.



CUMC also runs a weekly soup kitchen, and Salish Sea provides the soup (a gallon of vegie and a gallon with meat) on the third Saturday of the month. We are set through February, but if you would like to join the list of folks who provide soup and/or assist with set-up and clean-up in the future, please contact Kate Madson at kmadson3of9@gmail.com or Kendra Golden at kendrajgolden@gmail.com.

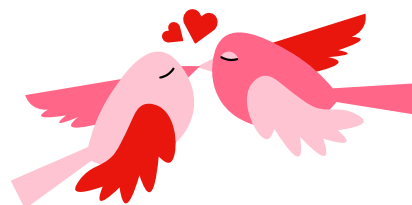


MEMBERSHIP



Membership Status: Consider Becoming a Member in 2025!

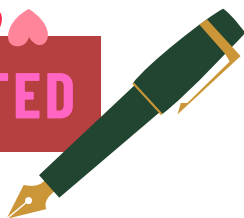
As you may know, you become a member of the Salish Sea Fellowship by filling out the application form (available [HERE](#)), and then being approved by the Board. All membership applications we have received have been approved by the Board. However, we have not had any formal, or even informal, welcome ceremony to the Fellowship. We do think, though, that we should have an open recognition and welcome of our new members, and we will figure out how to put this in place. We value and welcome all our members, and we certainly hope no one has felt neglected.



COMMUNITY REQUEST

The jar for CUMC donations will now be located on the same table as our treats. If you choose to make a contribution to the Methodist's deserving local ministries, please do so by the end of coffee "hour," before the discussion with our speaker begins. This will allow your donations to be tallied and deposited without requiring the recorder to be the last one out the door!

GALLIGRAPHER WANTED



Looking for a Calligrapher!

We now have a membership book thanks to the efforts of Elaine and Gary Nelson, thank you! We are hoping to have it beautifully inscribed - are you, or do you know a calligrapher willing to help us out? Please let Lily or Gary know. Thanks!

THE GOOD OF THE ORDER



If you have announcements you'd like to make, suggestions for this Community Update, or anything else on your mind about our community, let us know at SalishSeaFellowship@gmail.com.

