

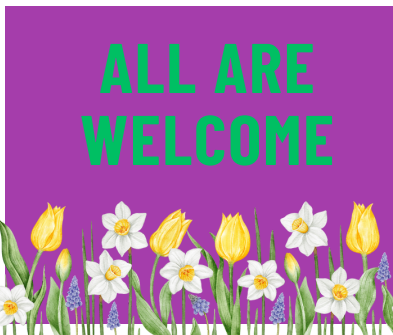
SALISH SEA FELLOWSHIP

A Religious Community with Open Hearts and Open Minds

COMMUNITY UPDATE



WWW.SALISHSEAFELLOWSHIP.ORG



>>> ABOUT US

The Salish Sea Fellowship is a center for liberal religion providing an independent educational, spiritual and liberal religious community of mutual support that embraces the traditional *seven principles* of Unitarian Universalism. This is our Community Update for our friends and members. If you have anything you would like to tell the community, please let us know at salishseafellowship@gmail.com.

HOW TO FIND US <<<

We meet in-person at the Community United Methodist Church (CUMC) in Port Hadlock, 130 Church Lane. You may also access the Sunday services online. Click [HERE](#) for our Zoom link for viewing our services, or go to Zoom and enter Meeting ID: 844 7353 7286, Passcode: 753350.





UPCOMING EVENTS



NOTE:

All Sunday Services from
January 5 - March 1
will take place at **2:00**

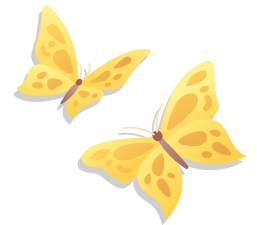


Rev. Pam Douglas-Smith: The Hidden Church of Love

SUNDAY SERVICE, FEBRUARY 2, 2 PM AT CUMC



The essential message of the Christian path is that of love. However, the ecclesiastical powers over centuries have focused on a tradition of theology, patriarchy, and control. On one hand, we have the highly visible Church of Roma, while on the other, we have the mystical Church of Amor. Rediscover this profound path that calls across time through the embodied spirituality of Jesus and Magdalene as we seek the true Holy Grail which is the divine within each of us.



JOYCE FRANCIS: NATURE'S GRACE

SUNDAY SERVICE, FEBRUARY 16, 2 PM AT CUMC



We are, no doubt, all familiar with these refrains from that wonderful spiritual by John Newton: "Amazing Grace, how sweet the sound that saved a wretch like me. And then later on: How precious did that Grace appear the hour I first believed. Newton's hymn is perhaps the iconic notion of Christian Grace. In this sermon, I will share with you my personal story of Grace, one of those hard-to-explain events some might call miraculous. Doris Lessing perhaps best captures my agnostic's idea of Grace as "something given by Nature in her role of spendthrift," thus, I use the term Nature's Grace.



UPCOMING EVENTS

COMMUNITY ACTION:

Mark your calendar for **February 16!** After the service we will host **Jean Walat of JCIRA** in our after-service informal discussion circle. She will introduce us to the **Jefferson County Immigrant Rights Advocates** organization and discuss the current planning to aid undocumented persons in our community. Bookmark www.jcira.org to keep up with the latest information.

This presentation will be in lieu of our usual Q&A with our speaker Joyce Francis (thank you Joyce!), but **Joyce plans on being available at our usual Wednesday Breakfast on the 19th** (see Breakfast Club below) **if you'd like to talk with her about her sermon.**



SALISH SEA COMMUNITY POTLUCK
SUNDAY, FEBRUARY 9, 5 PM AT CUMC



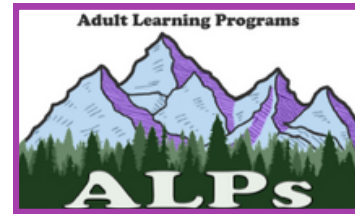
Doors open at 4:30 to allow for more socializing.

Please RSVP to salishseafellowship@gmail.com so we know how many to expect, and as always, bring your own beverages and table settings, as well as a dish to share. (PLEASE NOTE THAT THE TIME OF OUR COMMUNITY POTLUCK IS **NOT** CHANGING!)



Services you missed, are available [HERE](#). Sunday services that are available include the sermon and readings. Also, we now have 18 subscribers to our YouTube channel! You may access our YouTube channel [HERE](#). Finally, you may also click [HERE](#) to access our Sunday services live on Zoom.

ALPs (Adult Learning Programs)



3



February ALPs classes you won't want to miss:

- **IS THE PROBLEM CLIMATE CHANGE OR SOMETHING ELSE?** - Wednesday, Feb 5, 4:30-6:30 PM at PT Library. Ron Strange will share a curated video presentation.
- **WINTER BIRDING** - Wednesday, Feb. 12, 8-11 AM at Fort Flagler. Master Birders Dave Rugh & Penny Ridderbusch will lead a walk along the shoreline & more.
- **CLIMATE TIPPING POINTS** - 3 Thursdays, Feb 12-27, 2-3:30 PM at CUMC. Environmentalist Mark Cooper will present 16 climate tipping points for your consideration.
- **CLASSIC FRENCH DESSERTS** - Saturday, Feb 15, 12:30-4 PM in Judy's home. Culinary Institute Graduate Judy King will teach you to make four famous desserts.
- **COLLECTING STUDIO ART IN JEFFERSON COUNTY** - Saturday, Feb 22, 10:30 AM-Noon in Port Ludlow. Patsy Lea & Dan Meade, owners of one of Jefferson County's most spectacular homes with an amazing art collection, have invited two of their favorite artists to walk you through their home and view/discuss their art.
- **SAVING THE WORLD BY UNDERSTANDING OURSELVES BETTER** - Sunday, Feb 23, 2-3:30 PM at CUMC. Deep Thinker Doug Rodgers continues his series about our world, where it is going and what is our place in it. This segment focuses on a right-brain perspective.

See full descriptions and enrollment information at <https://salishseafellowship.org/other-activities-and-events/>.



Small Group Offerings



The **Salish Sea Fellowship Political Discussion Group** began as an ALPs group with a goal of becoming an Interest Group. Currently five members are delving into national and global politics from the viewpoints of history and culture. Some of us are certainly more knowledgeable than others, but all are committed to study and discussion as world events change around us. Are past/current events just one thing after another? Or can we discern trends? **This is an ongoing group which meets regularly by Zoom on the first and third Thursdays from 3:30-5:00.** Are you interested in joining us at this developmental stage? Please call Martha Moyer at cell 360-460-2528 with questions.



CARING AND CONCERNS TEAM



4



Breakfast Club:

Breakfast Club meetings are back on after the bustle of the holidays!

Sarah and Karen will hang out on Wednesdays (**ALL Wednesdays of the month**) at **9:30 AM** at the **Bay View Restaurant**. Join together for coffee, tea, breakfast or even pie! You could add ice cream (in the dairy group)!

Community Potluck:

Please join us to chase away the cold and gloom with lots of laughter, chatter, and yummy food! Community fills up our hearts during cold winter months.

Carpooling to Events:

Have you noticed how dark it is lately? It's that time of year; if you are interested in carpooling, please send an email to salishseafellowship@gmail.com. Tell us your preferred pickup location and phone number, and we will figure out a plan.

4th Sunday Gathering Ideas:

We are looking to generate ideas of ways for us to gather together in community during the 4th Sunday of the month. All ideas are welcome!

If you have suggestions, please complete a brief Google Form [HERE](#).

For specific questions, please reach out to **Karen Wamstad** at kjmwamstad@gmail.com.

FROM YOUR BOARD:

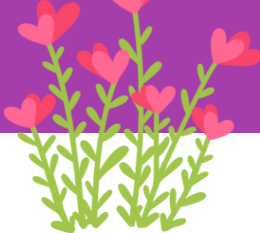
BRIAN ROGERS, RON STRANGE, GARY NELSON, JUDY KING, ROB WAMSTAD, & NILS PEDERSEN



Our 2025 Finances: So far we have received pledges of over 80% of our budget goal of \$57,475! Thank you! But if you have not yet returned your pledge, please do so soon. It would be great if you could have it back by the end of this week so we can get a good sense of where we stand for the year. You can find the form on our website here [HERE](#). After our February Board meeting we will report back on where the Salish Sea Fellowship stands financially.

The Fellowship should soon have its own dedicated Zoom account, which may help smooth out some of our technical issues. Thanks to Gary Nelson and Lily Gold for their efforts to keep us running smoothly!

HELPING OUR NEIGHBORS



Want to help our neighbors be warm and fed?



Our hosts, the Community United Methodist Church (CUMC) staff a free foodpantry and clothes closet on Saturdays from 10 to 1:00. With winter upon us, donations of individual pull-tab cans of chili, stew, hash and spam are exceptionally helpful, along with packets of hot chocolate, coffee and pasta with sauce. Warm coats, shirts, pants, scarves, gloves and blankets are also needed, but for now no lightweight clothing due to limited storage space. Please give nothing that is not clean, in good condition and something you would wear yourself.



CUMC also runs a weekly soup kitchen, and Salish Sea provides the soup (a gallon of veggie and a gallon with meat) on the third Saturday of the month. We are set through February, but if you would like to join the list of folks who provide soup and/or assist with set-up and clean-up in the future, please contact Kate Madson at kmadson3of9@gmail.com or Kendra Golden at kendrajgolden@gmail.com.



MEMBERSHIP



Membership Status: Consider Becoming a Member in 2025!

As you may know, you become a member of the Salish Sea Fellowship by filling out the application form (available [HERE](#)), and then being approved by the Board. All membership applications we have received have been approved by the Board. However, we have not had any formal, or even informal, welcome ceremony to the Fellowship. We do think, though, that we should have an open recognition and welcome of our new members, and we will figure out how to put this in place. We value and welcome all our members, and we certainly hope no one has felt neglected.



COMMUNITY REQUEST



The jar for CUMC donations will now be located on the same table as our treats. If you choose to make a contribution to the Methodist's deserving local ministries, please do so by the end of coffee "hour," before the discussion with our speaker begins. This will allow your donations to be tallied and deposited without requiring the recorder to be the last one out the door!



THE GOOD OF THE ORDER



If you have announcements you'd like to make, suggestions for this Community Update, or anything else on your mind about our community, let us know at SalishSeaFellowship@gmail.com.

