

Spring 2025 Classes, Workshops & Field Trips



*Adult Learning Programs (ALPs) are Open to All,
a Free Community Service of*

The Salish Sea Fellowship
<https://salishseafellowship.org>

A Religious Community of Open Hearts & Minds

SPRING PROGRAMS (See full descriptions beginning on p. 2):

- Jan 7→28 – Mythologems at PT Library with Ron Strange
POSTPONED – Recycling Waste Glass—YES WE CAN! with Gary Nelson & Friends
Jan 25 – Invited to Speak: A Can-Do Sermon Workshop with Joseph Bednarik
Jan 27 – Fish Wars: A Documentary and Discussion with Celeste Dybeck
Feb 5 – Is the Problem Climate Change or Something Else? with Ron Strange
Feb 12 – Winter Birding at Fort Flagler with Dave Rugh & Penny Ridderbusch
Feb 13→27 – Climate Tipping Points: Fact or Fiction? with Mark Cooper
Feb 15 – Classic French Desserts with Judy King
Feb 22 – Collecting Studio Art in Jefferson County with Patsy Lea & Dan Meade
Feb 23 – Saving the World by Understanding Ourselves with Doug Rodgers
Mar 3→24 – Great Decisions at JC Library with Joyce Francis
Mar 8 – Rose Care & Spring Pruning with Rob Wamstad
Mar 12→19 – Exploring the Energy Transition Story with Gary Nelson & Friend
Mar 23→May 25 – The Living Legacies of the 7 Principles with Gail Sandlin
Apr 4 – Art & Nature Day on Whidbey Island with Kendra Golden & Clara Mason
Apr 7→May 12 – Comparing Cultures: The Sequel with Ken Ing
May 7→May 28 – How to Know a Person with Joannie Murphy & Paul Hinton



1. **HOW DO I SIGN UP?** - Go to our SignUpGenius page at <https://tinyurl.com/SSF-ALPs2025Spring> and follow instructions. Select your choices BEFORE signing in or opening an account. Note, ALPs classes at our public libraries are open without sign-up.
2. **PASSWORDS?** - If you already have a SignUpGenius account from any source but have forgotten your password, go to <https://www.signupgenius.com/register> and put in your email, then click “forgot your password?” (at the bottom of the log-in box) and follow the directions for password help. You’ll receive an email directing you how to reset your password. Then, PLEASE write it down where you can retrieve it.

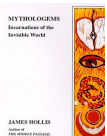
3. **ASSISTANCE? (including those who are just plain frustrated)** - Contact Joyce Francis, joyce.francis.pt@gmail.com or 301-512-6815.
4. **SPECIFICS OF EACH PROGRAM?** - Roughly one week before the program, ALPs Liaisons/Facilitators will contact you via email with specifics about where to meet, what to bring, and how you might carpool (if appropriate).

SPRING 2025 PROGRAM DESCRIPTIONS

1. Mythologems Ron Strange

4 Tuesday Afternoons, Jan 7→28, 3-4:45 PM on 7th, then 3:30-5:30 PM, PT Library

*****NO SIGNUP NECESSARY, JUST COME!*****



James Hollis writes that “the word myth originates as virtually all words do in a metaphor. A mythologem is a single, fundamental element, or motif, of any myth.” We live in a culture of great spiritual impoverishment; our contemporary Odysseys are redirected to the Apple Store, the palliative Pharmacy, or forays along the river Amazon Prime. Guided by Google, whereby all things are knowable, we wonder why we are so absent-spirited, so lost, and so adrift. We may say that these secular surrogates, these “isms” constitute our values, our *de facto* religious, those in which we most invest our energy. But we have to ask the obvious question, “How well are they working for us?”

In this reading/study/seminar (not a lecture), we will study the book “Mythologems: Incarnations of the Invisible World” by James Hollis, noted Jungian analyst, lecturer and writer. **Please acquire the book (\$~25) and read through page 42 prior to the first meeting.**

Ron Strange has had a 40-year interest in the Depth Psychology of Carl Jung. He was on the board and program committee of the San Diego Friends of Jung for over 20 years prior to co-developing Port Townsend Friends of Jung 16 years ago. He continues to offer study groups and educational programs for the public. For more information, contact Ron at ron.j.strange@gmail.com or 360-379-4908.

2. Recycling Our Waste Glass—YES WE CAN! Gary Nelson

3 Wednesdays, **POSTPONED, DATE TBD**, 6:30-8 PM, ONLINE via Zoom



Glass recycling on the Olympic Peninsula and beyond has ended because a glass bottle factory in Seattle closed. The ripple effect is there is no longer a market for our waste glass. However, there is a proven technology that grinds all colors of glass to fine powder that can replace 20% of Portland cement in concrete and improve its strength.

Manufacturing Portland cement produces 8 to 9% of total CO2 emissions. Our challenge is to develop a path that enables our waste glass to be used to help reduce CO2 emissions. The goal of this class is to co-create a way to make this happen.

Gary Nelson is a committed entrepreneur. He’s often been self-employed or has helped found new enterprises including two coffee houses, a new college of engineering, and three technology companies. He helped form a group of science types called “Innovation Beyond Zero” that does research and education on Clean Energy and Climate Change.

Recycling glass to reduce CO2 emission from concrete production is consistent with its mission. Contact Gary Nelson at gnelson.zynrgy@gmail.com or 360-531-2395.

3. **Invited to Speak: A Can-Do Sermon Workshop** *Joseph Bednarik*
1 Saturday Afternoon, **January 25**, 2-4 PM, Community United Methodist Church



You've accepted the invitation to deliver a sermon during a forthcoming Sunday service. You have about six weeks until showtime. Now what? This upbeat, improvisational, and fast-paced two-hour workshop covers the basics of writing and delivering a sermon— from the all-important title and description to writing exercises to get the juices flowing to standing up in front of your fellow workshop participants and delivering a few lines.

Participants should bring a can-do attitude, a sense of humor, and a willingness to be approximately 36% wrong about most of their precious notions. They should also bring a preferred writing instrument (pencil, pen, laptop, etc.), a willingness to tap into both intellect and emotion, and a favorite quote of 25 words or less.

Joseph Bednarik recently retired from his position as Co-Publisher at Copper Canyon Press. He speaks regularly at UU congregations in the Salish Sea region and published a book of his Sunday morning talks, *Invited to Speak: Tell it true, make it vivid, keep it light*.

For more information, contact ALPs Liaison Joyce Francis at joyce.francis.pt@gmail.com or 301-512-6815.

4. **Fish Wars: A Documentary Viewing & Discussion** *Celeste Dybeck*
1 Monday Morning, **Jan 27**, 10 AM→Noon, Jamestown S'Klallam Tribal Library in Blyn



The Point No Point Treaty was signed in 1855. The treaty gave Indians the right to fish and hunt in their usual and accustomed territory. When Washington State made it illegal for tribes to fish for salmon in their usual and accustomed territories, it was a declaration of war.

FISH WARS follows the tribes' fight to exercise their treaty-reserved fishing rights. A landmark case in 1974 (the Boldt Decision) would affirm the tribes' treaty rights and establish them as co-managers of the resource. But, the fate of salmon in the Pacific Northwest still hangs in the balance. Did you know Billy Frank Jr. was 14 years old the first he was arrested and thrown in jail for fishing on the Nisqually River? There will be a discussion after the documentary and a chance to tour the new Tribal Library, followed by lunch (Dutch Treat @20% discount) at 7 Brothers Restaurant at 7 Cedars for those who wish to join.

Celeste Dybeck is an elder of the Jamestown S'Klallam Tribe and an award-winning fabric artist for her traditional button blankets prominently displayed in Blyn and beyond. She wants to share with you the history of her tribe from 1855 to today. For more information, reach Celeste at celestedybeck@icloud.com or 360-280-4675.

5. Is the Problem Climate Change or Something Else? *Ron Strange*

1 Wednesday Evening, Feb 5, 4:30-6:30 PM, PT Library Pink House.

*****NO SIGNUP NECESSARY, JUST COME!*****



This curated video presentation is science and data-driven from the beginning and may lead one to personal philosophical questions and opportunities by the end. Time for discussion will be included and encouraged.

This may be a difficult class for some as the full picture of our ecological predicament becomes apparent. This class is not for those looking for solutions but interested in the question, "How to Live and What to Live For," given the information presented and the situation we find ourselves in. Culture historian and scholar, Thomas Barry has said in his book "The Dream of the Earth": "We are in a technological trance that drives a misguided dream of progress. Only when we foster mutually enhancing human-earth relationships will we be able to heal our traumatized, global biosystem."

Ron Strange has had a 40-year interest in the Depth Psychology of Carl Jung. He was on the board and program committee of the San Diego Friends of Jung for over 20 years prior to co-developing Port Townsend Friends of Jung 16 years ago. He continues to offer study groups and educational programs for the public. For more information, contact Ron at ron.j.strange@gmail.com or 360-379-4908.

6. Winter Birding: Fort Flagler's Feathered Friends *Dave Rugh & Penny Ridderbusch*

1 Wednesday Morning, Feb 12, 8-11 AM, Fort Flagler



A long walk along the shoreline and perhaps into the forest. Therefore, this field trip is only for active walkers. Prior to the trip, participants will be contacted with the meeting location and ways to rideshare. Drivers must have a Discover Pass to access the park.

Dave Rugh has assisted the Jefferson Land Trust and the local Natural History Society with birding studies for many years, including leading outings, giving lectures, and doing wildlife monitoring. **Penny Ridderbusch** became a birding enthusiast after seeing her first Northern Flicker many years ago. She has co-led several birding outings with Dave on the Olympic Peninsula and has birded in Nepal, Bhutan, South America, and the Southwest.

For more information, contact Gail Sandlin at 360-551-1625 or gbsandlin@gmail.com.

7. Climate Tipping Points: Fact or Fiction? *Mark Cooper*

3 Thursday Afternoons, Feb 13→27, 2-3:30 PM, Community United Methodist Church



What are the 16 climate tipping points, are they real, and, if so, what does that mean for our future well-being? We will cover the work of the late Al Bartlett and Johan Rockstrom, among others. This class will be highly interactive.

Mark Cooper is a longtime ALPs participant who was finally convinced to offer his own program. He describes himself as an average citizen interested in the impact of a changing climate and how it is affecting our lives and the lives of future generations. For more information, contact Mark at tout123@gmail.com or 586-360-8750.

8. Classic French Desserts

Judy King

1 Saturday Afternoon, **Feb 15**, 12:30→4 PM, Judy's Kitchen in Port Townsend



In this class, the participant will learn how to create four classic French Desserts: Pear Tarte Tatin, Julia Child's Cherry Clafoutis, Chocolate Pots de Crème, and French Apple Tarte. All recipes will be demonstrated and detailed instructions on how to recreate these classics at home will be included. And of course, your sweet tooth will be satisfied by the end. There is a \$20 cost per participant for ingredients.

Judy King has been a serious home cook for more than 30 years. In 2007 she decided to check off another item on her bucket list and attend culinary school. She graduated from the San Diego Culinary Institute in 2007, shortly before moving to Port Townsend. She designed her kitchen in order to teach small cooking classes out of her home. Cooking is her passion, and she loves making recipes accessible so class participants can recreate them at home. Contact Judy at Judith.king2@icloud.com or 360-643-5374.

9. Collecting Studio Art in Jefferson County

Patsy Lea & Dan Meade

1 Saturday Morning, **Feb 22**, 10:30 AM→Noon, Port Ludlow



Many of the artists whose art is featured at the Bainbridge Museum of Art live and work on the Olympic Peninsula. Studio tours are one way to become acquainted with the Peninsula's vibrant culture. Another is to visit the homes of collectors who have focused on acquiring the work of Jefferson County artists.

Artists Ike Eisenhour and Richard Jesse Watson will accompany Patsy & Dan on a 90-minute tour of their home and collection in Port Ludlow. The twenty participants will be divided into two groups to tour this unique Pacific Northwest home built around a three-story atrium.

Patsy & Dan both worked on Wall Street in NYC. They decided to retire to the Olympic Peninsula the moment that they stepped inside their Port Ludlow home twenty years ago. Originally an engineer and then a research director in New York, London and Hong Kong, Dan quickly developed an interest in the liberal arts. A pharmaceutical and biotechnology stock analyst, Patsy returned to her art historical roots in retirement.

For more information, contact ALPs Liaison Joyce Francis, who will contact enrollees about a week prior to this event to give directions and facilitate ridesharing. Some might wish to follow this tour with lunch at the Port Ludlow Inn or Molcajete in Port Ludlow Village. Reach Joyce at joyce.francis.pt@gmail.com or 301-512-6815.

10. Saving the World by Understanding Ourselves Better

Doug Rodgers

1 Sunday Afternoon, **Feb 23**, 2-3:30 PM, Community United Methodist Church & Online



This is the fourth in a series of sessions about our world, where it is going and what is our place in it. We will review the left-brain view—we can figure it out and fix it, vs. the right-brain perspective—we can't figure it out, it's bigger than we are, go with it.

In this session we will go further with the right brain—God, after death experience, the need for adventure. We will watch several short videos and talk about what they might mean. If there is interest, we can plan more sessions.

Doug Rodgers is a retired engineer who has a long history of interest in how things work. He has a long history with religion, mostly UU, and has recently become fascinated with how our left brain and our right brain seem to work differently. For more information, contact Doug at douglas.rodgers@sbsglobal.net or 360-385-2023.

11. ALPs at JC Library: Great Decisions

Joyce Francis

4 Monday Afternoons, Mar 3→24, 2-3:30 PM, Jefferson County Library

*****NO SIGNUP NECESSARY, JUST COME!*****



The Foreign Policy Association (FPA) is celebrating its 106th year. Its mission is to catalyze developing awareness, understanding, and informed opinion on U.S. foreign policy and global issues. Through its balanced, nonpartisan programs and publications, the FPA encourages citizens to participate in the foreign policy process.

FPA's Great Decisions Program is America's largest foreign affairs education and discussion program. Launched in Portland, Oregon in 1954, the program gained media attention, was picked up by local schools, and soon gained national attention.

Each of the four weeks, we'll review current information about the topic of the week, watch a video presentation by an international relations expert, and then discuss the U.S. foreign policy options available to us. Lastly, you'll be asked to offer your opinions on each topic through an online survey. This is your chance to have your voice heard, as FPA staff brief several national agencies about these surveys.

Joyce Francis has facilitated Great Decisions since 2013. Before moving to the Olympic Peninsula, she taught International Relations at George Mason, Tulane, and American University prior to moving to the Olympic Peninsula.

For further information about the Great Decisions 2025 program, see https://www.fpa.org/great_decisions/ or contact Joyce at joyce.francis.pt@gmail.com or 301-512-6815.

12. Rose Care & Spring Pruning

Rob Wamstad

1 Saturday Morning, Mar 8, 10 AM-Noon, Rob's home and garden in Port Townsend



Roses are well known throughout Port Townsend and the rest of the county. Frequently they are a "one-off," inherited from a family member or present when the property was purchased. Often neglected, they are survivors. But things could be better.

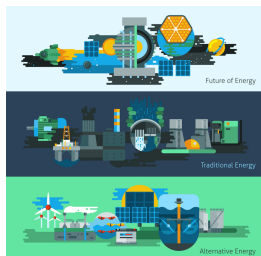
Have you wondered when and how to prune a rose? How to cut flowers for the house? How to control disease and pests? You can read about it in a book or online. But it helps to have someone lead or fill in the gaps, especially at a local level. We'll have an in-house session, then go out to the rose garden for hands-on pruning.

Roses are a hobby for Rob. He has grown beds of 30 to 50 bushes from San Francisco to Boise to Atlanta to DC to Marblehead and was a frequent visitor to the Golden Gate Park and to the Portland Rose Gardens. Recently, after installing a deer fence (hint), he has planted 50 roses with mixed results. But the flowers are still coming in the door as recently as Thanksgiving. Rob has made at least 20 house calls in Port Townsend and elsewhere to assist. For more information, contact Rob at wamstad.pt@gmail.com or (415) 744-4250.

12. Exploring the Energy Transition Story

Gary Nelson & David Blessing

2 Wednesday Afternoons, **Mar 12 & 19**, 1-3 PM, Community United Methodist Church



First session: Energy--where it comes from and how we use it; a worldwide summary. Different energy types (process heat, electric power, etc.)

Second session: Energy sources now. Advances in energy generation and distribution and where a lot of additional work is required. How we will find a path forward.

David Blessing worked at Naval Reactors, the joint DOE/Navy nuclear power program for 32 years and for 9 years at Lockheed Martin on various nuclear design concept developments. **Gary Nelson** is an entrepreneur and retired telecommunications engineer with data analysis skills he enjoys applying to gain a better understanding of global energy transition. For more information, contact Gary at gnelson.zynrgy@gmail.com or 360-531-2395.

13. The Living Legacies of the 7 Principles

Gail Sandlin

Three 4th Sunday, **Mar 23, April 27, & May 25**, 2-4 PM, Community United Methodist Church



The Seven Principles have served as a moral and ethical guide of Unitarian and Universalist traditions. This discussion group will explore the history and meaning of each principle through the contemporary lens of a challenging world. The goal is to enrich understanding and meaning, to reinforce commitment to the traditions of our faith, and to perhaps offer layperson, lived-experience guidelines of our 7 Principles tradition.

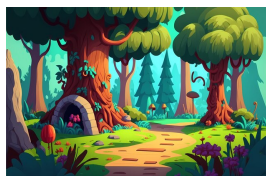
This discussion group will focus on one principle each month, beginning in March, continuing for three months, and then reconvening in the Fall.

Gail Sandlin has lived the Unitarian tradition most of her adult life, often unaffiliated, yet over the years, she has been a member of 7 UU/Unitarian congregations/associations with lay service as Board Member, various committee memberships and Green Sanctuary lead. Gail has an Interdisciplinary PhD and professionally has been an academic educator as well as an environmental regulator at the Dept of Ecology. For more information, contact Gail at gbsandlin@gmail.com or 360-551-1625.

14. Art & Nature Day on Whidbey Island

Kendra Golden & Clara Mason

1 Full Friday, **Apr 4**, 9:30 AM-5 PM, Whidbey Island (**Rain Date April 11**)



We will take the 9:30 ferry and drive to downtown Langley to visit Callahan's Firehouse Studio and Gallery where we can watch glass blowing, interact with the artists at work, and enjoy finished products in the Gallery. Callahan McVey is a Whidbey Island native who has been studying and blowing glass since his teenage years.

We will have lunch (pay your own way) at The Braeburn Restaurant, next door to the Firehouse. Then we will drive just east of Coupeville to explore the Price Sculpture Forest. Here you are encouraged to "wander the trails, investigate outdoor art, and be immersed in the natural world". The park, which opened in 2020, is set in a forest of

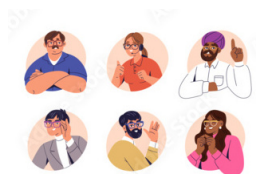
century-old trees and rhododendrons. This free sculpture exhibit includes a self-guided tour via your cell phone.

The trails total 0.6 miles and are divided into two loops. The first loop (Nature Nurtured) is 4 feet wide and very level (for a forest setting, with gradual variances throughout). The second loop (Whimsy Way) is 3 feet wide, wanders down a sloped hillside, and then comes back up, with about 100 feet of elevation difference. All trails are made of hard-packed dirt. Six sitting benches are located along the trails. We will take a 4:15 ferry back to Port Townsend.

Kendra & Clara just thought this might be a fun day out. For more information, contact Kendra Golden at kendrajgolden@gmail.com or 360-774-1576.

15. Comparing Cultures: The Sequel *Ken Ing*

6 Mondays, Apr 7→May 12, 1-3 PM, Community United Methodist Church in Port Hadlock



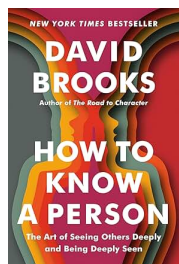
There are many different ways to compare and contrast the cultures of countries. In this sequel to the SSF ALPS class offered last Fall, which was titled “No One Right Way,” we will consider the insights of three books: “Rule Makers Rule Breakers”, the classic “Cultures and Organizations,” and “The Upswing.”

This is not a book study - there should be no need for attendees to read the books on their own.

Ken Ing is recently retired, after a career in Information Technology in private business. He loves learning about economics, politics and history. Since retiring, he has presented over a dozen talks, all based on books he found particularly thought-provoking. Creating presentations is now his #1 hobby. Contact Ken at kennething@comcast.net or 360-930-0800.

16. Symposium on David Brooks’s How to Know a Person *Joannie Murphy & Paul Hinton*

4 Wednesdays, May 7-28, 3:30-5 PM, Community United Methodist Church in Port Hadlock



A group discussion of *How to Know a Person*. We hope to reach the result highlighted by the author, that we will advance toward seeing others deeply, and being seen deeply. Read a review [here](#).

We see this as a roundtable discussion of a book that seems particularly pertinent at this time in our society. Please acquire the book (<\$15) on your own. We look forward to what we can all bring to this discussion.

For more information, contact Paul at paulsailon@aol.com, Joannie at jlmalex1@aol.com



The Salish Sea Fellowship (SSF) is a center for liberal religion providing an independent educational, spiritual, and liberal religious community of mutual support that embraces these traditional seven principles of Unitarian Universalism.